

**SMART MONITORING
WALL CABINET
FOR AUTOMATED
EXTERNAL
DEFIBRILLATOR
(AED)**



Aivia[®] 320

AIVIA Model 320

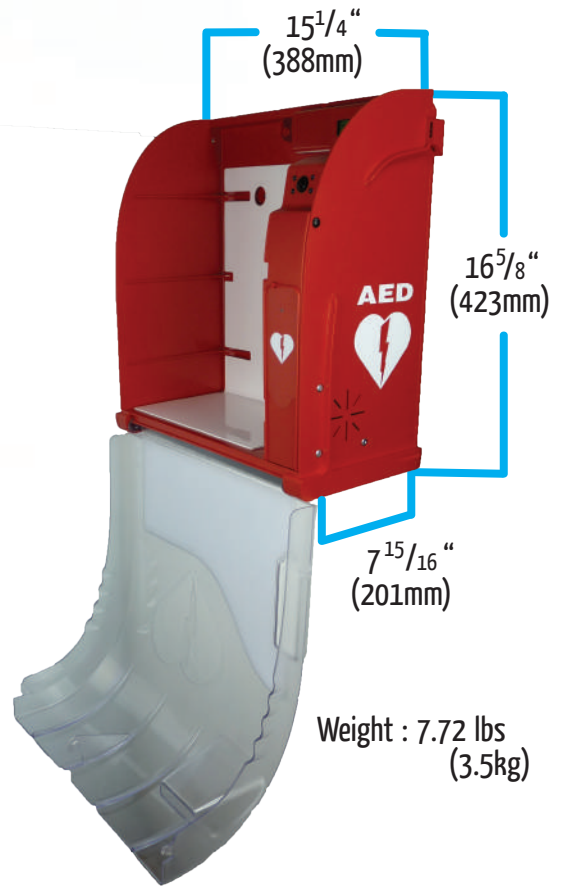
SMART AED MONITORING CABINET

The AIVIA 320 allows automatic GSM phone calls in case of an emergency as well as the remote monitoring of the hardware via Internet.

Having an emergency calling terminal status, this model is an intelligent AED protective cabinet which is permanently connected to the AIVIANet server through http, ensuring that all the AIVIA units remain fully operational at all times.

The AIVIA 320 has the ability to constantly monitor its own functions, the presence of the AED as well as its immediate surroundings.

It provides realtime information concerning incidents and events.



Weight : 7.72 lbs
(3.5kg)

CLOSE-UP VIEWS



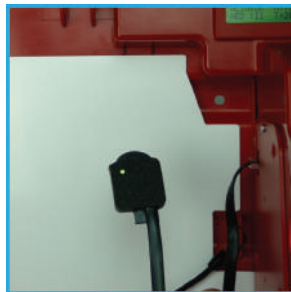
Ventilation fan
and convector
heating device



Infra-red lens
taking pictures
upon the opening
of the cabinet
and removal of
the AED



Call button to
activate GDM
hands free
telephone
module.



Sensor
monitoring the
presence of the
AED and
controlling the
temperature



LCD screen
displaying
general
status or
incidents



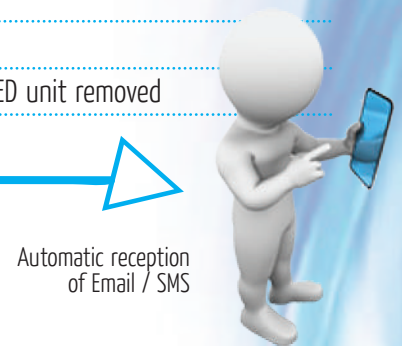
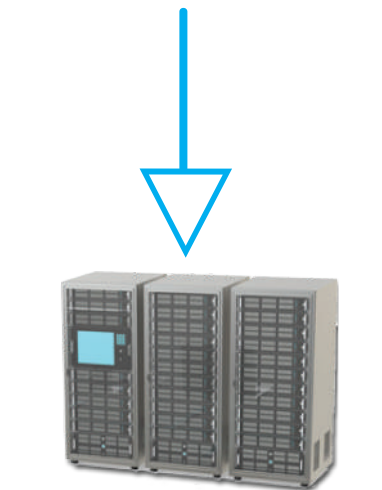
OVERVIEW

STANDARD FEATURES

- ▶ Impact-resistant transparent polycarbonate cover and red ABS base
- ▶ Sensor monitoring the presence of the AED and the temperature surrounding the defibrillator
- ▶ Backlit LCD screen displaying the status of the power, network, temperature and presence of the AED
- ▶ Protected access to the AED thanks to security seal stickers
- ▶ Local visual warnings (flashing red LEDs) indicating incidents
- ▶ GSM : Emergency phone connection via the mobile phone network, using hands free telephone intercom. Automatic phone call is made in case of emergency when the cabinet is opened or when the call button is pushed as preset by user.
- ▶ Connection to local (LAN) Ethernet network plus possibility of wireless communication
- ▶ 3G communication : In addition to the standard Ethernet LAN connection, AIVIA 320 and the AED it contains can also be monitored by 3G communication through the mobile phone network if a LAN connection is not available.
- ▶ Integrated light sensor to light up the AED compartment in dark locations
- ▶ 24V DC SELV (Safety Extra Low Voltage) for human safety
- ▶ RFID badge reader for maintenance purposes
- ▶ Rechargeable back-up battery for essential functions in case of power supply failure

SPECIFIC FEATURES

- ▶ Constant remote monitoring of the presence of the AED through a sensor
- ▶ Http communication between the AIVIA cabinet and the AIVIAnet server
- ▶ Realtime information concerning incidents or events
- ▶ Immediate and automatic routing of data via Email / SMS
- ▶ Optional photo surveillance when the cabinet is opened and the AED unit removed



THE AIVIANET SERVER

A MONITORING SOFTWARE APPLICATION

The AIVIA net server is a software application which ensures straightforward, remote and around-the-clock monitoring of the AIVIA cabinet and the presence of the AED stored within.

Accessible through secure access from any computer connected to the Internet, the AIVIA net server offers constant remote monitoring of the presence of the AED and its protective cabinet, providing realtime information concerning incidents or events which may occur.

Features and benefits of the AIVIA net server:

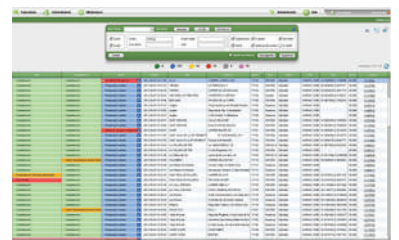
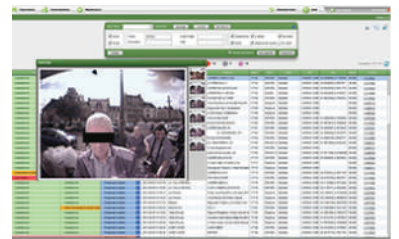
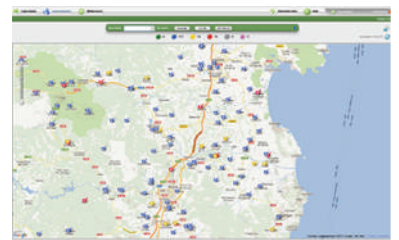
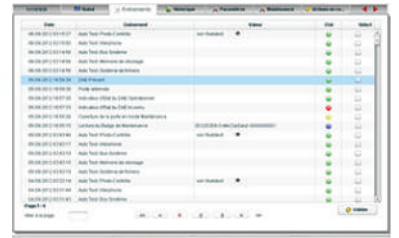
- ▷ Multilingual version requiring a username and password to access the server
- ▷ Incidents displayed with the possibility of verifying and logging information and events
- ▷ One or several AIVIA cabinet(s) monitored at any time (presence of the AED, photos taken upon opening the cabinets, control system, alarms...)
- ▷ Programmable to send Email / SMS alerts to one or more recipients should an incident occur
- ▷ Recordkeeping of past incidents
- ▷ Color-coded data Interpretation
- ▷ Geolocation of any AIVIA cabinet connected to the network



A CONFIGURATION AND MAINTENANCE TOOL

In addition to monitoring AIVIA cabinets, the AIVIA net application is an easy-to-use online tool for the configuration and maintenance of these cabinets, featuring an online diagnostic capacity.

- ▷ Configuration can be modified from the server
- ▷ Online diagnostic capability and interpretation by error code
- ▷ Details and automatic routing of incidents (Emails/SMS wordings, recipients...)
- ▷ Recordkeeping of maintenance events for each AED and cabinet
- ▷ Instructions concerning necessary preventative actions (keeping users informed of the expiration of the pads and batteries, serial numbers...)



HD1PY
 THOMPSON CENTER WATERS
 5453 WEST WATERS AVENUE - SUITE 105
 TAMPA, FL 33634
 Phone: 813 515 6995